

# DF-G2 DF-G3 Process Data Function

---

11/11/2022

This document covers the installation and use of a function for Siemens's TIA Portal software package. This function handles cyclic IO-Link Process Data In from a Banner DF-G2 or DF-G3 sensor via an IO-Link Master to a Siemens PLC. The function covers parsing and display of the DF-G2 or DF-G3 sensor Process Data In.

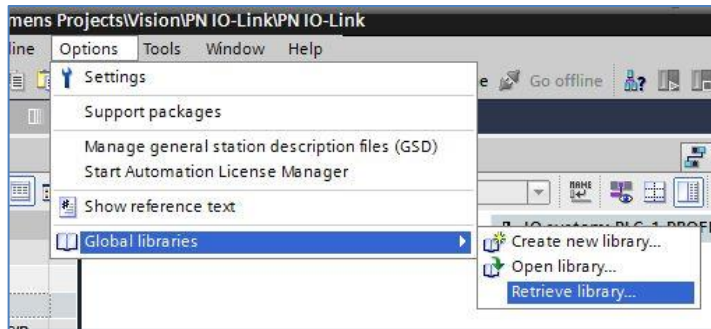
## **Components**

Banner DFG2 DFG3.zal14

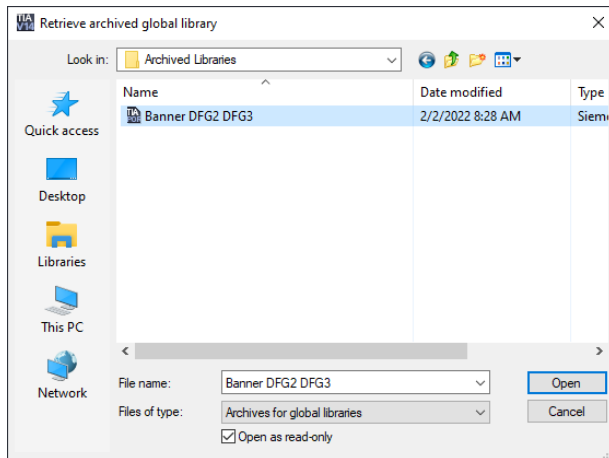
There are two methods for the process data. The first is used when creating a connection to Banner's IO-Link masters. The second set of instructions are for systems using other manufacturer's IO-Link masters.

## **Installation Instructions**

1. Open a project.
2. Go to Options > Global Libraries > Retrieve Library.



3. Select the Banner DFG2 DFG3. Click Open.



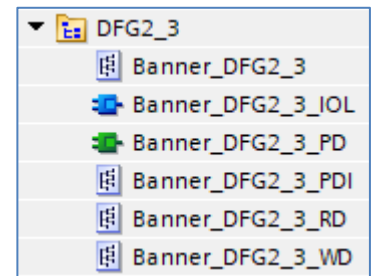
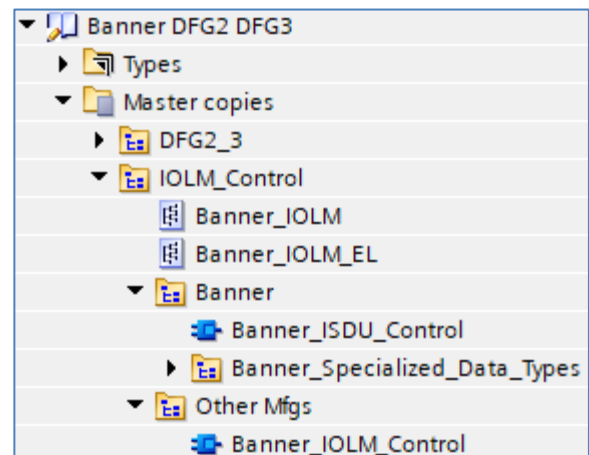
4. The library is now accessible in the Libraries tab.
5. Go to page 3 for Banner IO-Link Masters and to page 6 for all other IO-Link Masters.

### **Setup of DF-G12 or DF-G3 with a Banner DXMR90-4K**

1. Go to Device and Networks to configure the DXMR90-4K. Add the DXMR90-4K if it has yet to be added to the system.
2. Add Banner IO-Link Master Info to Slot 1. This sets the DXMR90-4K for IO-Link mode.
3. Open the IO-Link Generic Devices and select the proper module. The 2/2 byte option has been selected for port 1. Make note of the I address for the Slot 2 which represents Port 1. Slot 2 starts at 10. The other number needed is I14. The data for the port start at that point (I14). The previous four bytes represent Port Status, Process Data In Size, and Process Data Out Size.

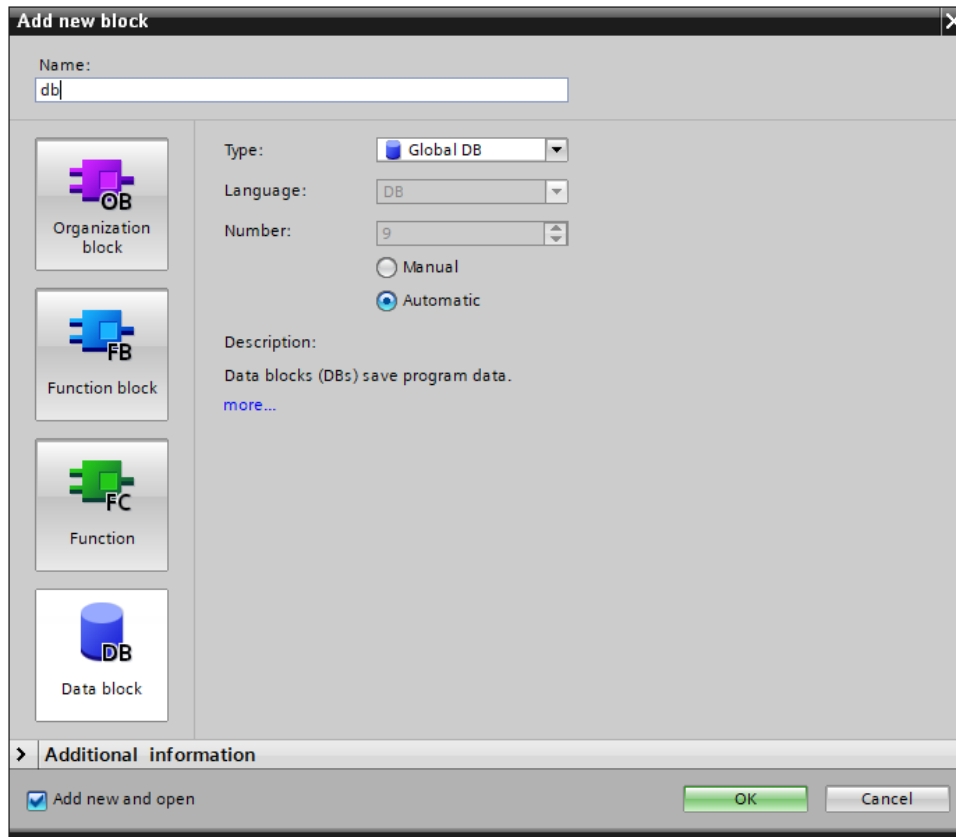
Module	Rack	Slot	I address	Q address	Type
▼ dxm	0	0			1-port Device
▶ Interface	0	0 X1			dxm
Banner IO-Link Master Info_1	0	1	1...9		Banner IO-Link Master Info
IO-Link In/Out 2/ 2 Byte + St...	0	2	10...15	1...16	IO-Link In/Out 2/ 2 Byte + Status

4. Drag the Banner\_DFG2\_3\_PDI to the PLC Data Types area under your PLC. Banner\_Q4X\_PDI is found in the DFG2\_3 folder in the library. Drag the Banner\_DFG2\_3\_PD to the Program Blocks area.
5. Drag the necessary tag from IOLM\_Control > Banner > Banner\_Specialized\_Data\_Types. The tag used in this example is "Banner\_2in". This tag represents the full raw process data along with port status information.
6. Go to PLC Tags. Create two tags. One tag is for the full data structure while the second creates a tag to represent the raw Process Data from the IO-Link Master. In this example, Tag table\_1 was created, then the tag "DFG2 IOLM1 01 PDI" was created using a Data Type of "Banner\_2In". This naming convention calls out the type of sensor in question as well as the specific IO-Link Master and port number where the sensor is connected. A different IO-Link Master might be named IOLM2 or IOLM3, for instance, and other specific sensors may be connected to different port numbers. The "I" address found in step 2 is tied to this new tag. The second is "DFG2 IOLM1 01 inRaw". This is the tag that will be used in the Function block.



Name	Data type	Address
▶ DFG2 IOLM1 01 PDI	"Banner_2In"	%I10.0
DFG2 IOLM1 01 inRaw	Word	%IW14

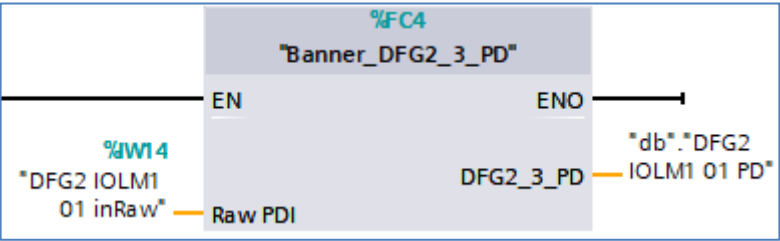
7. Go to Program blocks. Add a new Data block if necessary. In this example the new data block is named "db".



8. In the new data block, create a new tag to represent the parsed Process Data In for our DF-G2. The tag name again calls out the type of sensor, the IO-Link Master, and the port number. Use the data type "DFG2\_3\_PDI" for the new tag.

Name	Data type
▼ Static	
■ ▼ DFG2 IOLM1 01 PD	"Banner_DFG2_3_PDI"

9. Add the “Banner\_DFG2\_3\_PD” function to an OB ladder. Link the “Raw PDI” to the raw Process Data variable from step 5. Link the “DFG1\_PD” to the parsed Process Data variable from step 7.

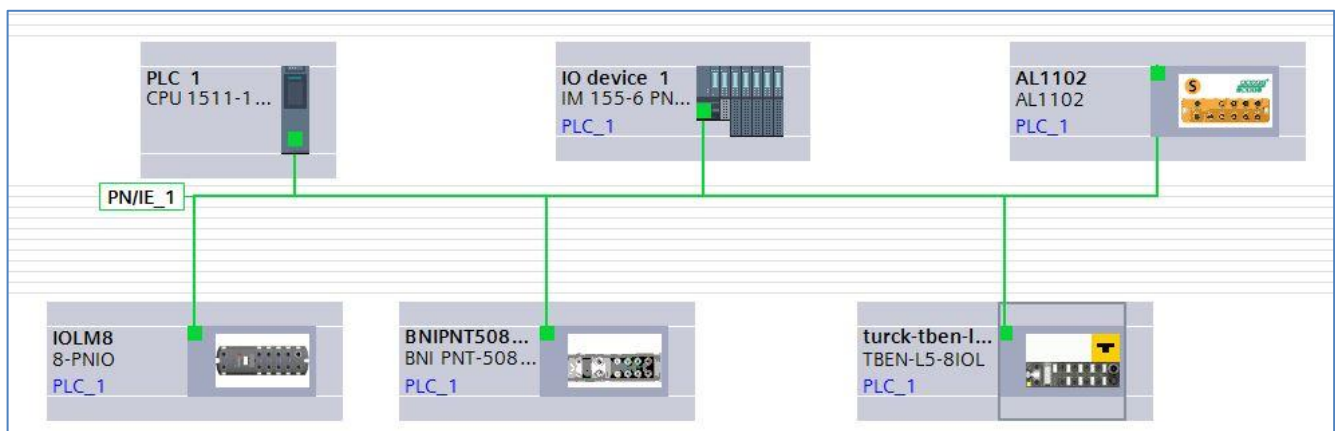
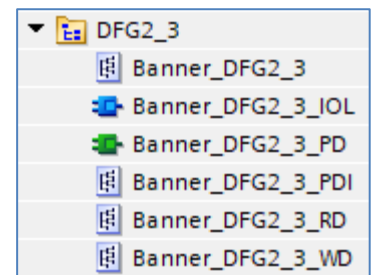
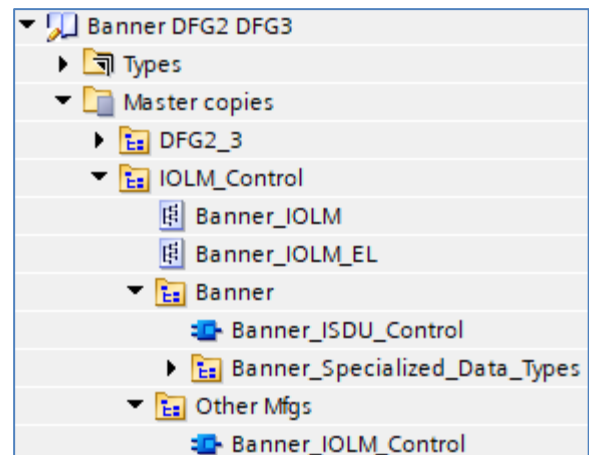


10. Process Data setup is complete.
11. Compile and download the configuration to the PLC, then go online. Open the “db” data block and click Monitor all. You should see parsed DF-G2 Process Data In, like that shown below.

Name	Data type	Start value	Monitor value
▼ Static			
■ ▼ DFG2 IOLM1 01 PD	"Banner_DFG2_3_PDI"		
■ BDC1 Output State	Bool	false	FALSE
■ BDC2 Output State	Bool	false	FALSE
■ Measurement	UInt	0	273

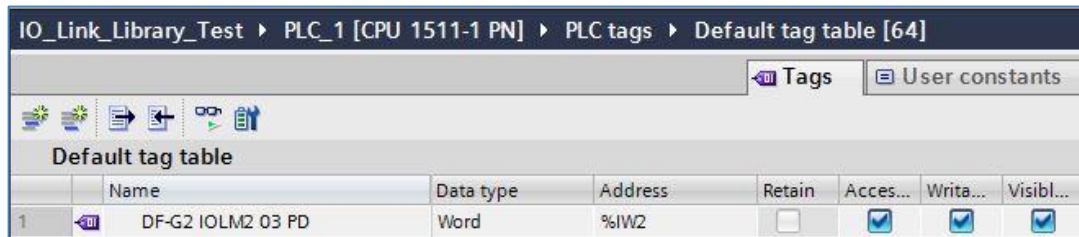
### Setup of DF-G2 DF-G3 with other IO-Link Masters

1. The Banner DFG2 DFG3 library will now be in the Global Library List. Expand the Master copies section. The DF-G2\_3 folder contains elements for both Process Data and Parameter Data connections to a DF-G2 or DF-G3 sensor. As Process Data is the focus of this paper, we will concern ourselves with these two items: Banner\_DFG2\_3\_PD and Banner\_DFG2\_3\_PDI.
2. Drag Banner\_DFG2\_3\_PD to the Program Blocks area under your PLC.
3. Drag the Banner\_DFG2\_3\_PDI to the PLC Data Types area under your PLC.
4. Go to Devices and networks to configure the system as necessary. Below is an example of what a configuration might look like. This example shows 5 different IO-Link Masters connected to the same PLC.



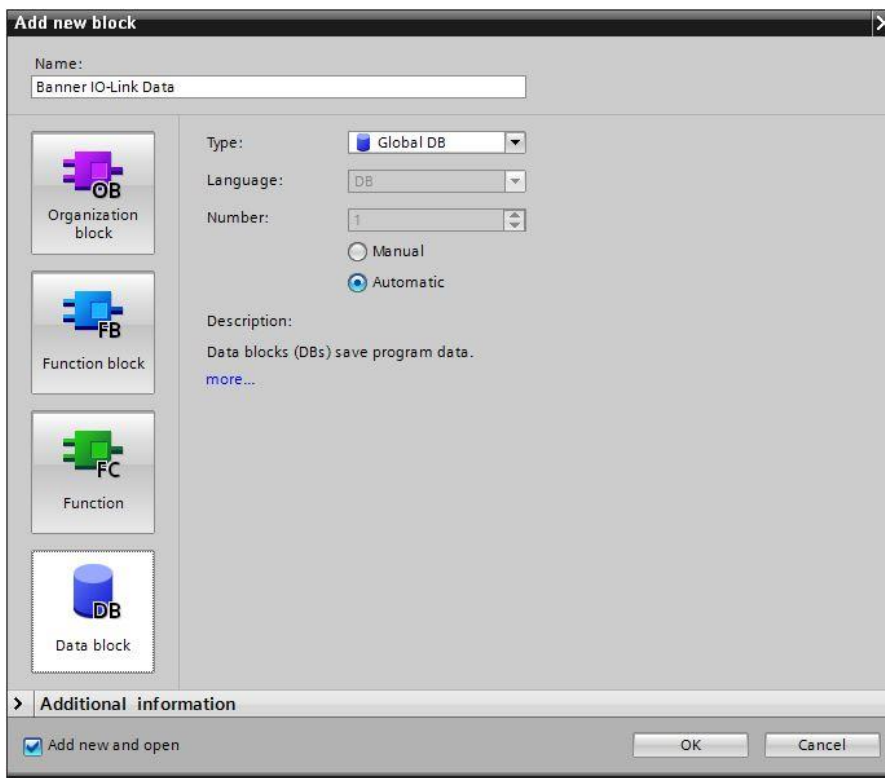
5. Click on the relevant device and configure the IO-Link Master as necessary. Refer to the documentation for the IO-Link Master. Recall that a DF-G2 or DF-G3 requires 2 bytes of space for the Process Data.
6. Record the "I" address where this DF-G2 or DF-G3 Process Data is to be stored, as the address will be required in the next step. In this example, 2 bytes of Process Data In for port 3 on the IO-Link Master will be stored in I2 and I3.

- Go to PLC Tags. Add a new tag table, then create a new tag to represent the raw Process Data from the IO-Link Master. In this example, Tag table\_1 was created, then the tag “DF-G2 IOLM2 03 PD” was created using a Data Type of “Word”. This naming convention calls out the type of sensor in question as well as the specific IO-Link Master and port number where the sensor is connected. A different IO-Link Master might be named IOLM1 or IOLM3, for instance, and other specific sensors may be connected to different port numbers. The “I” address found in step 9 is tied to this new tag.



	Name	Data type	Address	Retain	Acces...	Writa...	Visibl...
1	DF-G2 IOLM2 03 PD	Word	%IW2	<input type="checkbox"/>	<input checked="" type="checkbox"/>	<input checked="" type="checkbox"/>	<input checked="" type="checkbox"/>

- Go to Program blocks. Add a new Data block if necessary. In this example the new data block is named “Banner IO-Link Data”.



**Add new block**

Name:

Organization block (OB) | Function block (FB) | Function (FC) | Data block (DB)

Type:  | Language:  | Number:

☐ Manual | ☒ Automatic

Description: Data blocks (DBs) save program data. [more...](#)

> Additional information

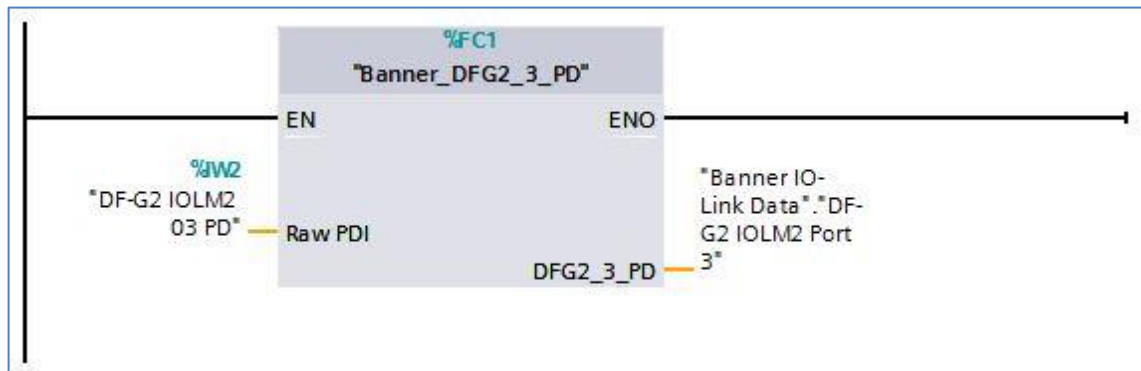
☒ Add new and open

OK Cancel

9. In the new data block, create a new tag to represent the parsed Process Data In for our DF-G2 or DF-G3. The tag name again calls out the type of sensor, the IO-Link Master, and the port number. Use the data type “Banner\_DFG2\_3\_PDI” for the new tag.

Banner IO-Link Data					
	Name	Data type	Start value	Retain	Accessible f...
1	Static			<input type="checkbox"/>	<input type="checkbox"/>
2	DF-G2 IOLM2 Port 3	"Banner_DFG2_3_PDI"		<input type="checkbox"/>	<input checked="" type="checkbox"/>

10. Add the “Banner\_DFG2\_3\_PD” function to an OB ladder. Link the “Raw PDI” to the raw Process Data variable from step 10. Link the “DFG2\_3\_PD” to the parsed Process Data variable from step 12.



11. Process Data setup is complete.
12. Compile and download the configuration to the PLC, then go online. Open the “Banner IO-Link Data” data block and click Monitor all. You should see parsed DF-G2 or DF-G3 Process Data In, like that shown below.

Banner IO-Link Data				
	Name	Data type	Start value	Monitor value
1	Static			
2	DF-G2 IOLM2 Port 3	"Banner_DFG2_3_PDI"		
3	BDC1 Output State	Bool	false	TRUE
4	BDC2 Output State	Bool	false	TRUE
5	Measurement	UInt	0	1370



**Appendix A****DF-G2 and DF-G3 Process Data**

The DFG2 and DFG3 both have 2 bytes of Process Data In, as shown below.

ProcessDataIn "Process Data In" id=PD_ProcessDataIn									
bit length: 16 data type: 16-bit Record (subindex access not supported)									
subindex	bit offset	data type	allowed values	default value	acc. restr.	mod. other var.	excl. from DS	name	description
1	0	Boolean	false = Inactive, true = Active					BDC1 Output State (Q)	State of the discrete output
2	1	Boolean	false = Inactive, true = Active					BDC2 Output State (Q)	State of the discrete output
3	2	14-bit UInteger						Measurement	
Octet 0									
bit offset	15	14	13	12	11	10	9	8	
subindex	3								
element bit	13	12	11	10	9	8	7	6	
Octet 1									
bit offset	7	6	5	4	3	2	1	0	
subindex	3						2	1	
element bit	5	4	3	2	1	0			

This Process Data is mapped to a specific group of PROFINET addresses. The 16-bits of Process Data encode three separate pieces of information. Bit 0 is the state of BDC1 (Binary Data Channel 1, also known simply as Output Channel 1). Bit 1 is BDC2 (Channel 2). The remaining 14 bits are used to communicate the DF-G Measurement value.

This function intelligently parses this Process Data into its component pieces.